

# Agress 1100 HPLC System



Engineered using the core competencies of our experience, Agress1100 provides superior data quality, excellent robustness and long-term performance.

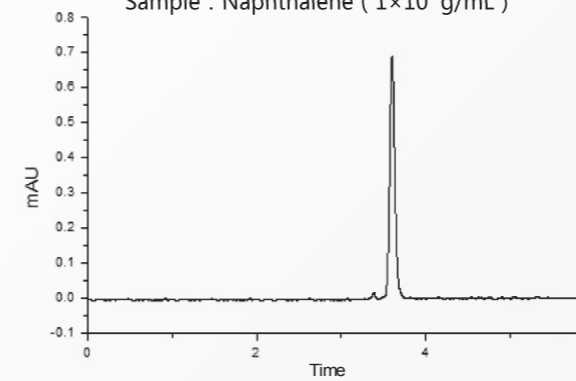
## Key Technologies

- Connections University
- Methods Validation Software and System
- Performance Certified Training and Education

## Excellent Performances

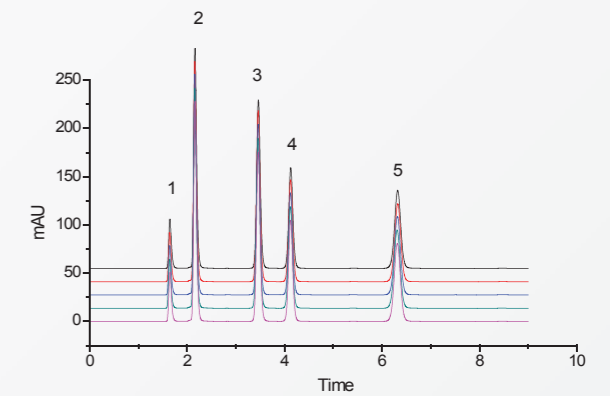
### The LOD as low as $4 \times 10^{-9}$ g/mL

Mobile phase : Methyl alcohol  
 Flow rate : 1mL/min  
 Detection wavelength : 254nm  
 RT : 1.0s  
 Sample : Naphthalene ( $1 \times 10^{-7}$  g/mL)

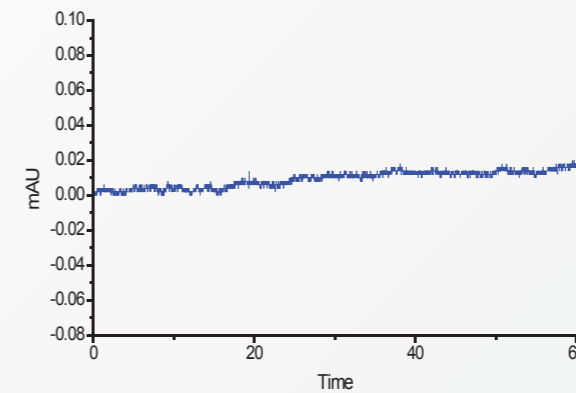


### Repeatability

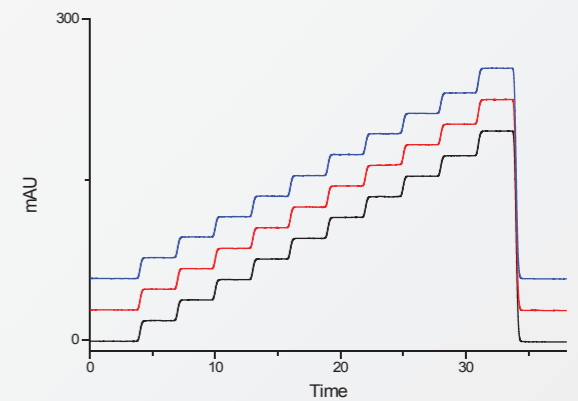
1-uracil , 2-acetophneone , 3-toluene ,  
 4-ethyl benzene , 5-fluorene  
 Peak area of fluorene: RSD=0.048%  
 Retention time of fluorene: RSD=0.017%



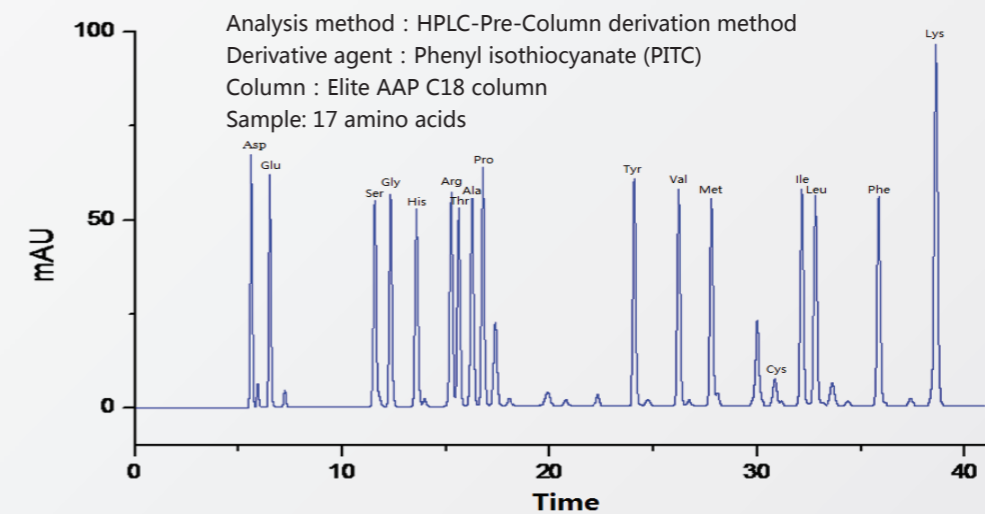
### Baseline Noise



### Gradient



### High Resolution



# P1100 High Pressure Constant Flow Pump

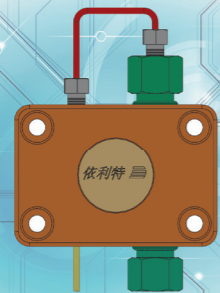


## Specifications

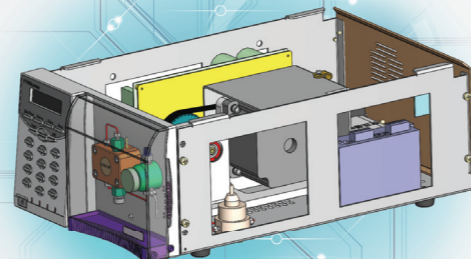
Flow Rate	0.001-10.000 mL/min (Step: 0.001 mL/min)
Accuracy	±0.3%
Precision	0.1% RSD
Max Pressure	42 MPa (6000 psi)
Dimension/Weight	420 mm×260 mm×160 mm/12 kg
Power	AC 220 V, 50 Hz

## Characteristics

- Function keys for setting Max. pressure and switching A/B pump
- Decreased fluid pulsation
- Improved stepper motor operation stability by radiating way



Pump Head



Framework

# D1100 UV/VIS Detector

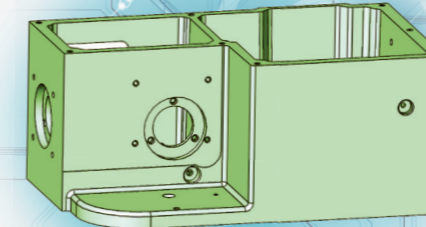


## Specifications

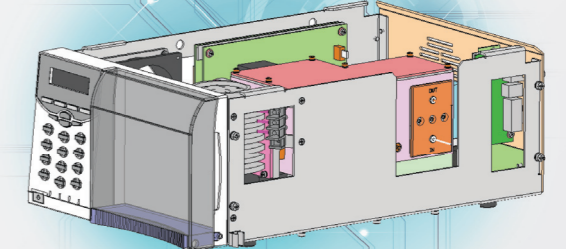
Wavelength	190-700 nm
Noise	±1.0×10 <sup>-5</sup> AU
Drift	2.0×10 <sup>-4</sup> AU/h
Dimension/Weight	420 mm×260 mm×160 mm/12 kg
Power	AC 220 V (±10%) , 50 Hz/100 W

## Characteristics

- Function keys for wavelength program and D2 Lamp energy
- D2 lamp alarming function
- Casting monochromator framework for improved light path accuracy and sealing efficiency



Monochromator



Framework



# O1100 Columns Oven



## Specifications

Temperature	R.T.+5 °C~99 °C
Setting Precision	0.1 °C
Control Accuracy	±0.5 °C
Dimension/Weight	120 mm×65 mm×500 mm/8.5 kg
Power	AC 220 V (±10%) , 50 Hz



# W1100 Workstation

W1100 workstation is the classical chromatography data-processing system, with a completely fresh external-connect design hardware (USB port) and software based on Win OS, with up to date software design technology(O-O) and the experiences collection of many experts & clients, all of the above make it to be more functional, and easily-operated workstation.

W1100 is easily operated as MS OFFICE software, such as analysis of complex samples with visual and graphical button line. Call out chromatogram with clipboard under the software of WORD and create a report of pictures & words. W1100 can accommodate the Agress HPLC system, and any types of chromatography instruments. It is the ideal substitute of integrator, data processor and traditional workstation, so it will be your right hand in your laboratory analysis.



## Characteristics

- Simple for use
- Flexibility in data display
- Real-time and fast determination of peak area
- Easy review of entire system
- Real-time operating status and indicator feedback of instrument units
- Easy comparison of multiple chromatograms
- Customizable reports
- Supporting tools for GLP / 21 CFR Part 11—Audit trail of whole system and chromatograms
- User accounts-selectable rights, unique user profiles, allow to create a unique password to protect profiles of each user.